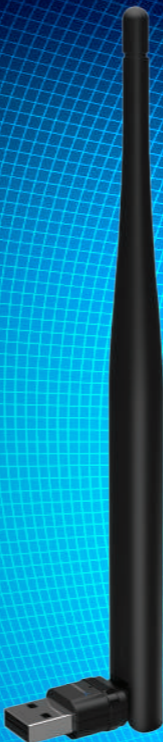


# SABRENT

Connecting Differently™

## WIFI 802.11AC DUAL BAND USB ADAPTER WITH EXTENDED RANGE



Specifications & User Manual

## INTRODUCTION

Thank you for purchasing the wireless USB adapter. It allows you to connect your laptop or desktop to any wireless networks in your home office. The wireless USB adapter is great for those who want to upgrade older computers to be able to access the internet over a wireless network.

## PACKAGE CONTENTS

Wireless USB adapter  
Driver CD  
Manual

## SYSTEM REQUIREMENTS

Windows XP/Vista/7/8/8.1  
Mac OS, Linux

## INSTALLATION

### Important

For proper operation, please do not connect the wireless USB adapter to your computer before you install the software. If you do, wait for the found new hardware screen to display and click “Cancel”; otherwise, the installation process will likely be adversely affected.

Insert the include setup CD in the CD-ROM Drive and start the Setup.exe program.

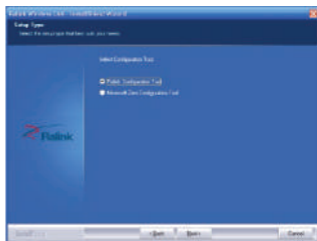
To start the installation, please select the corresponding driver from the options according to the adapter you used.

Wait for the installer to run

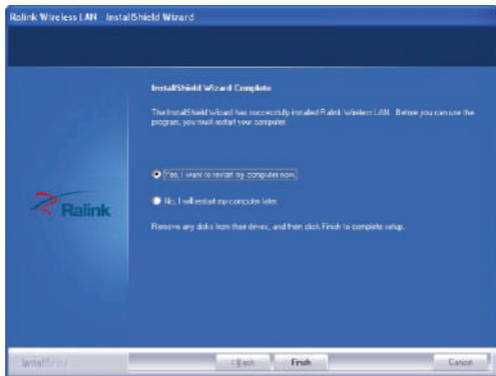
When the License Agreement screen displays, read the agreement and click “Next” to accept the terms and continue with the installation.



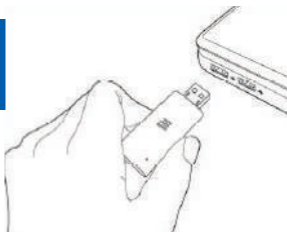
On the second Setup Type screen (below), choose a configuration tool. “Ralink Configuration Tool” is recommended, as it provides access to all adapter features.



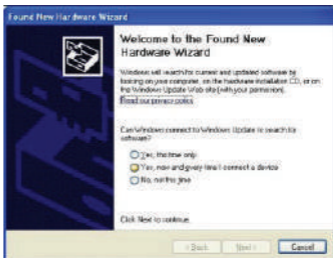
If you prefer to use the tool provided by Windows XP/Vista, select “Microsoft Zero Configuration Tool”. Choose either (the setting can be changed after the install), then click “Next”.



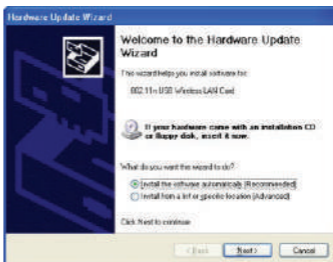
With the computer now turned on, insert the wireless USB adapter in to an open USB port.



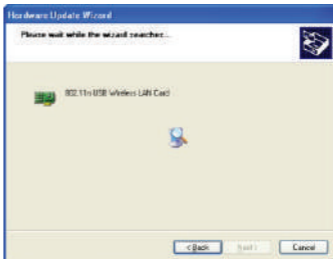
With the Welcome to the Found New Hardware Wizard screen displayed (which is automatic when the adapter is connected to the computer), select the option “No, not this time” and click “Next”.



When prompted with “What do you want the wizard to do?” select “Install the software automatically (Recommended)” and click “Next”.




A status screen will display, indicating that the installation is in progress. No action is needed at this point.

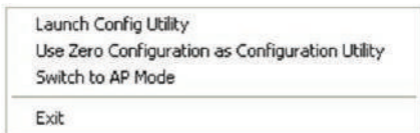


When the completing the Found New Hardware Wizard screen displays, it indicates that the installation has been successfully completed and your wireless USB Adapter is ready for configuration.

## CONFIGURATION

Once the installation is complete, you can configure the wireless adapter to connect to a wireless access point (AP). The wireless configuration utility will start automatically, and you'll also find a tray icon at the lower right in your windows systems tray.

Right-click on the Ralink icon  in the task bar in the bottom right hand corner of your screen.



Let you change the operation mode of the utility.

**Launch Config Utility:** Select this option to display the Utility's main screen

**Use Zero Configuration as Config Utility:** (Windows XP only) select this option to use windows to set up and manager your network connection. Selection of this mode is not necessary in Windows Vista, 7 or higher, as you can use windows and the relink utility to manager the adapter without changing operating modes.

**Switch to Client +AP Mode:** (Windows 7 and higher only) Select this option to let computers and devices connected to the Ralink AP access the internet (or another network to which the Ralink AP is connected).

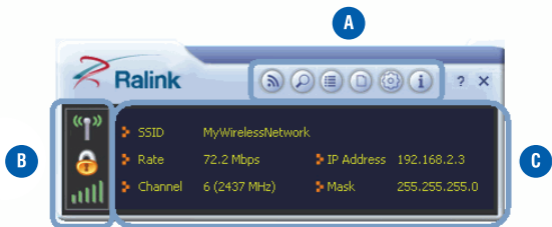
**Switch to AP Mode:** Select this option to use the Utility as an access point and to set up a wireless network of your own.

**Exit:** Select this option to close the main screen and exit the program. Any wireless connections managed by Ralink Utility will be disconnected.







## Accessing the Utility's Features

The Ralink Utility lets you connect to a wireless network and the internet, set up a wireless network, connect directly to other computers or devices using WiFi direct, and many more wireless-related features.

From the main screen, you can access the main features of the Utility (A), and find out about the status of your current network connection (B and C). By accessing the menu from the Ralink taskbar icon.



**A** - Click these buttons to open the following screens and access the Ralink Utility's features.

-  Use the WiFi Direct screens to set up a WiFi Direction connection, and to shar media files such as music moves.
-  Use the available Networks screen to find out about available wireless networks and their network status, and to connect to a wireless network
-  Use the Link information screens to find details information on the statuses of your wireless connection.
-  Use the profile Setting screens to set up and use profiles to more quickly connect using frequently used settings, and to set up wireless security.
-  Use the Advanced screens to select your region code, and to install WAPI certificates.
-  Use the about screen to find version information for your Utility.

**B** - Use these buttons and icons to manage transmission and to find information about your wireless connection.



Click this button to enable or disable wireless transmission.



Indicates the security status of your connection.



Indicates the quality of your wireless connection.

**C** - Use this screen to find information on wireless network setting

**SSID:** This shows the name of your wireless network.

**Rate:** This shows the speed of your connection.

**Channel:** This is the channel assigned to your connection. Change this if interference is a problem on your network.

**IP address:** This identifies the Ralink Adapter on your wireless network, much like a physical mailing address identifies a house on a street.

**Mask:** The subnet mask hides your IP address from outside your wireless network.